

Master of Science in **Integrated Architectural Design**

Be a Design

Visionary: Shape the
future architectural
excellence

On-campus

BE REAL,
BE YOU.

Master of Science in Integrated Architectural Design

This Master is a postgraduate study intended for review the most significant phenomena affecting our society, in order to use them as **a way of rethinking** and presenting other **spatial, functional, professional, social and cultural logics** that are geared towards an evolved conception of architecture.

The **logics of architectural design** and construction are in continuous adaptation to the context in which they operate. Their systems of methods and principles are expanded to face challenges such as climate **change, technological disruptions, economic and geopolitical collapses**, and demographic movements, among other major global changes.

The **objectives** of this program are to **promote innovative architectural design** integrated with the wide range of skills on technical and cultural knowledge that **contemporary architecture demands**; to encourage critical; to expand and to renew the role of design practices.

LOGICS OF EVOLUTION FOR CONTEMPORARY CONTEXTS

WHY TAKE THIS MASTER AT LA SALLE-URL?

You will able to develop an **innovative architectural design skill**, integrating inputs from **building technologies, environmental analysis, mapping practices, advanced functions diagramming, social studies, theoretical speculation, communications** and **editorial**, allowing you to foster an evolution within the discipline.

You will emphasize an integrated approach to architectural **design** and **research** and will analyze the visions of some referents on the global context. In doing so, you will take up the challenges to which you will have to respond imminently.

A **body** of local and **international practitioners, thinkers** and **curators** or **editors**, who have been working for an expanded conception of architecture for more than 20 years, will be part of the faculty. **You will be learning from them**, through dynamic and participatory sessions, on how following the logics of innovation and evolution.

COORDINATOR

Ricardo Devesa (Dr. Architect)

DURATION

9 months

LANGUAGE

English

CREDITS

60 ECTS

SCHEDULE

Monday to Thursday from 7:00 p.m. to 10:00 p.m. and 3 hours per week of extracurricular activities.

ENTRY PROFILE

Architects, engineers, designers who have completed an undergraduate professional program in architecture or its equivalent.

QUALIFICATION

Master in Integrated Architectural Design, La Salle-URL and Bologna official qualification that enables access to develop a doctorate or Ph.D.



What I liked most about the academic experience was the diversity of professionals with whom we had contact, either through classes, lectures or visits. I also found very interesting the proposal to explore diverse areas other than 'traditional' architecture. We worked with curatorship, publishing, digital design, and that opened our eyes to the countless possibilities of architecture".

GLORIA SCHÖNBURG
Alumni 2022- 2023.

RANKINGS

Top 1 Best University in Spain in Engineering and Architecture Postgraduate Studies

U-Ranking, 2022

At the School of Architecture and Building Engineering La Salle-URL (ETSALS) you will study architecture in an experiential and alive thriving way, to respond to the great global challenges of this century. You will learn your profession combining the three (fundamental) axes fundamental: design, technique and culture, in a live and International Campus in Barcelona where you can develop and experience each project through our own methodology "Learning by Challenge".

1

2

3

4

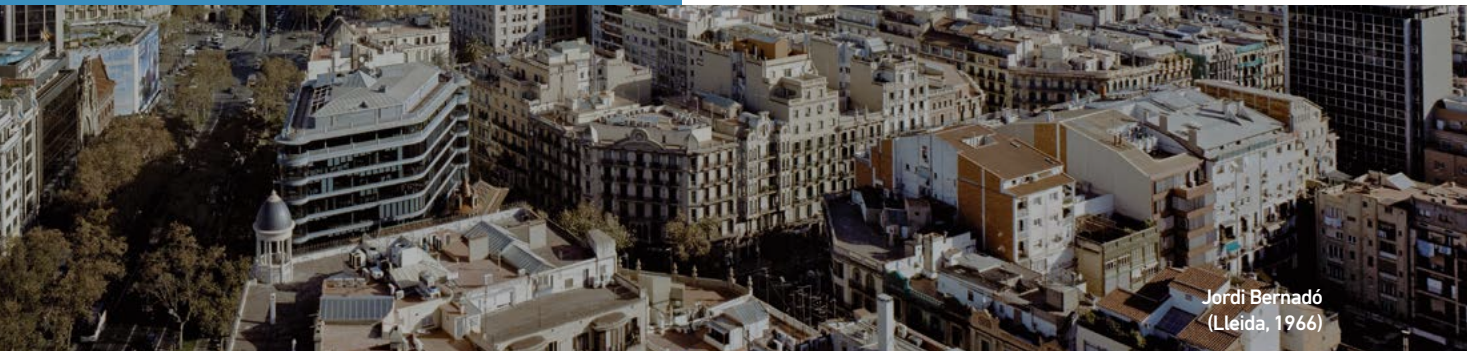
OBJECTIVES

Explore architectural design integrated within a broad body of knowledge and **address integrated architectural logics** as a central research horizon.

Engage in a multi-logic's curriculum and activate a skill range that **runs from the initial concept to detailed design** and its dissemination.

Promote innovation critically engaging both traditional and new approaches.

Take advantage of Barcelona as an architectural laboratory and of La Salle Campus Barcelona for an interdisciplinary approach.



Jordi Bernadó
(Leida, 1966)



Future visions are always uncertain and involve a lack of action. Instead, the logical concepts that we address in the Master will be exemplified with specific practices that have already been being applied for over a decade, as I have mentioned. I do think about the future, yes, but the imminent future, the one that requires immediate action. In what is already being done and what must be considered for tomorrow".

RICARDO DEVESA
DR. ARCHITECT
Program Coordinator.

PROFESSIONAL OPPORTUNITIES

After completing the Master of Science in Integrated Architectural Design, you will be able to pursue a professional career as:

Architectural and urban designer in its different scales and functions

Researcher in new solutions to global challenges

Data analyst for the implementation of urban strategies

Content editor and curator of cultural activities

ACADEMIC PROGRAMME

TERM I

Environmental Logics

Context: climate crisis and energy efficiency

Spatial forms in response to environmental and thermodynamic conditions, redefining its elements and relationships

Construction is one of the most polluting industries. How can we adapt design strategies to project and build architectural spaces more committed to the climate crisis? How does architecture use the materials and the increasingly evolved and integrated construction techniques to rethink inhabited spaces?

Workshop. **Contemporary Territories: Thermodynamic Interactions**

Seminar. **The Scale of Landscape: The Landscapes of Energy**

Social Logics

Context: social inequalities and challenges

Open programmatic forms adaptable to new multi-functional agencies

Architecture is an agent that operates within an integral ecosystem. Its functionalities can be organized more efficiently with temporary occupations, hybridization of programs and reuse of the existing. In a constant reformulation of the usability of buildings, how can we get adapted to be more resistant and sensitive to the continuous changes? Faced with the unstoppable migratory movements, the increasing price in land, the society's impoverishment and the rise in inequalities, what suggestions can we implement to accommodate more affordable and non-discriminatory living environments? How can architecture commit to balancing such inequalities?

Workshop. **Materialization of urban space. Blind Structures**

Seminar. **Urban Interstices: Co-housing, Co-living, co-Building**

TERM II

Digital Logics

Context: technological disruptions in post-humanist era

Enriched and adaptive perceptual forms from digital tools and technologies

As architects we work from diverse and adjacent disciplinary fields, in groups, in networks, building bridges between research, evolved design and industry. How are we going to expand professional capabilities? How is the profession of architecture being affected when disruptive and innovative technologies such as the management and use of big data, robotics and Artificial Intelligence are increasingly being used?

Workshop. **The Cover in Architectural Design: Responsive Envelopes**

Seminar. **Materiality and Scale: Digitalization Takes the Command**

Tectonic Logics

Context: material resources efficiency

Corporeal forms in response to an informed matter, manufactured and more efficient

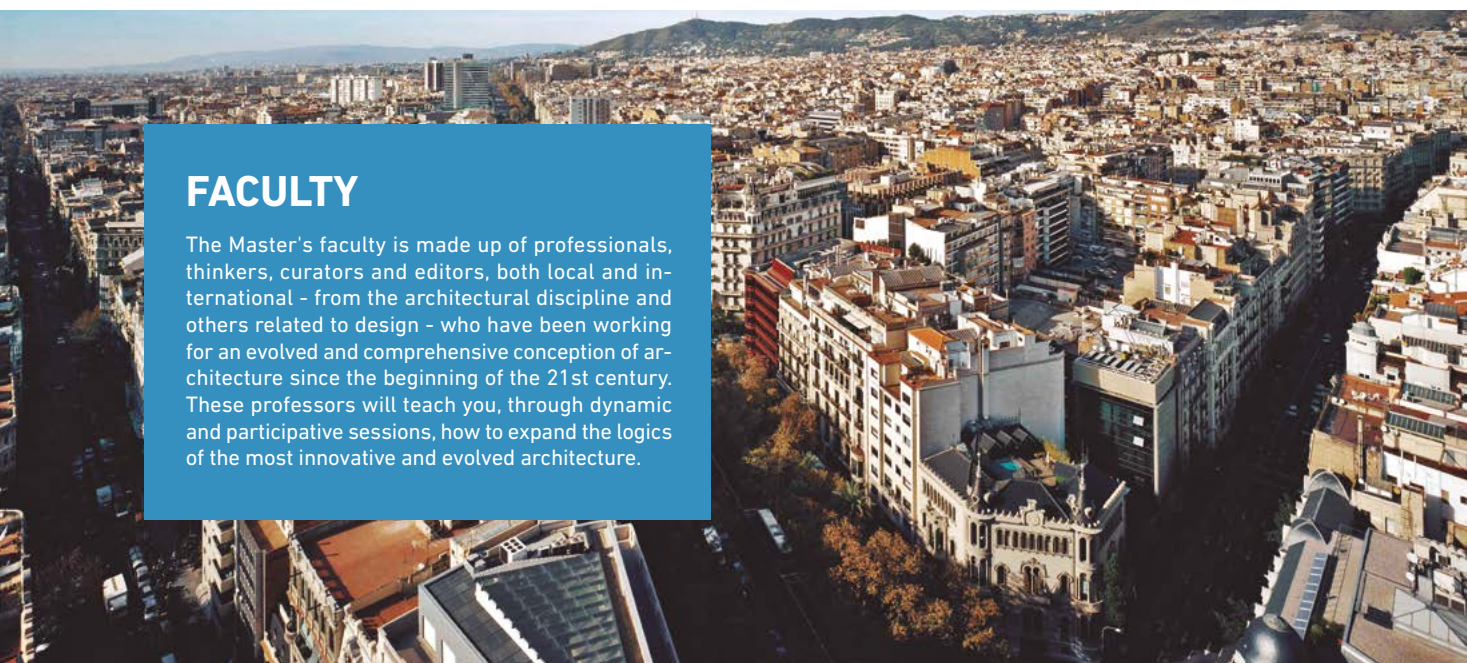
The manipulation of matter is one of the basis of expressive, technical and perceptual thought in architecture. How will architectural corporeality change through the use of improved and natural materials as well as the artificial ones? What impact will the manufacture and implementation of these materials have on their spatial, energetic and perceptual conformation?

Workshop. **Façade and Structure in Architectural Design: Eco-tectonics**

Seminar. **An Approach to Tectonics and the Architecture. Project: Dark Ecologies**

FACULTY

The Master's faculty is made up of professionals, thinkers, curators and editors, both local and international - from the architectural discipline and others related to design - who have been working for an evolved and comprehensive conception of architecture since the beginning of the 21st century. These professors will teach you, through dynamic and participative sessions, how to expand the logics of the most innovative and evolved architecture.



TERM III

Cultural Logics

Context: cosmovisions and alternative stories

Theoretical forms, meanings and communication in response to contemporary contexts

Faced with obsolete meanings in the world and inappropriate to global challenges, in the era of mass communication and thoughts written in the network, what other cultural, theoretical suggestions and communicative actions can discipline develop to renew our worldviews? How will we explain and spread this innovative and evolved architecture?

Workshop. **The Obj./Prod. Design in Architecture: Contemporary European Architecture Concerns**

Seminar. **Environment Architecture: the Crisis of Obj. Oriented Product (Architecture Across Media)**

Transversal Workshop

The transversal workshop suggests carrying out an architectural project to apply everything learned from previous blocks, that is the five logics of evolution. It tries to acquire the answers from a holistic perspective to social, environmental, urban and territorial, technological and cultural contexts.

Workshop. **Transverse Multi-scalar: Multi-logics**

Research

Architectural research is not limited to an academic context; it also has a very significant presence in the professional field. Graduate courses are the perfect opportunity to learn how to transform genuine interest into a formal research project. The course aims to explore conceptual approaches and methodological tools to successfully address research in the expanded architectural field, encompassing design, planning, landscape, building technology, and rendering.

Workshop. **Doctoral Thesis Formulation**

Methodologies of Investigation

Optional

Seminar. **Energy and Enclosure: Environmental Impacts**

Seminar. **Mediation Systems in Architectural Design: Operative Mapping**

Master's Final Project

Conclusion and summary of all the work done during the master's program. This work can be formulated in different experimental formats, whether these are utopian projects, theoretical reflections, temporary exhibitions or functional models.

Master Final Project (Monitoring + Final Work)

DIPIA

PH.D. IN INTEGRATED ARCHITECTURAL DESIGN

Upon completion of 60 credits of the Master, you can access to the investigation period. These are 12 ECT credits until the completion and defense of the doctoral thesis.

RESEARCH STAGE

It mainly consists on the development of the doctoral thesis, which is an original and or unpublished research. Once following the period of training, the student will have already chosen a specific line of work, and it will be trained to undertake the process of the doctoral thesis.

To complete this process, the doctoral student is linked to a research group that develops academic activities (seminars, conferences, congress, etc.).

ARC REPRESENTATION COMPUTING ARCHITECTURE

It is a interdisciplinary research group dedicated to the integration of technologies information and communication architecture.

IAM MEDITERRANEAN ARCHITECTURE RESEARCH

It aims the study of Mediterranean architecture in project scope, technology and territory.

MODALITY

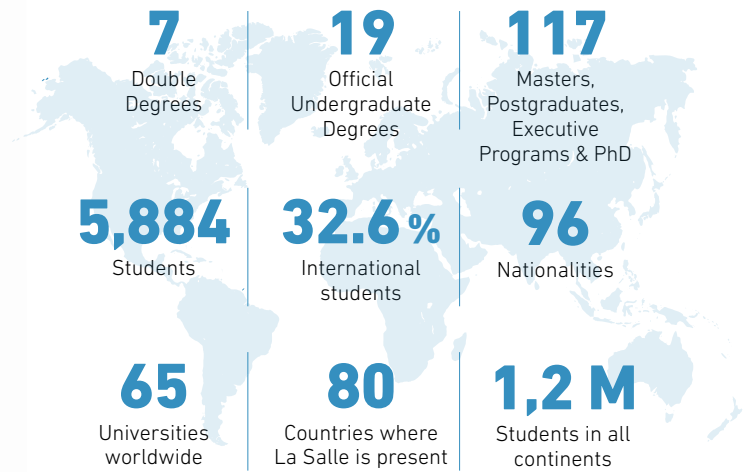
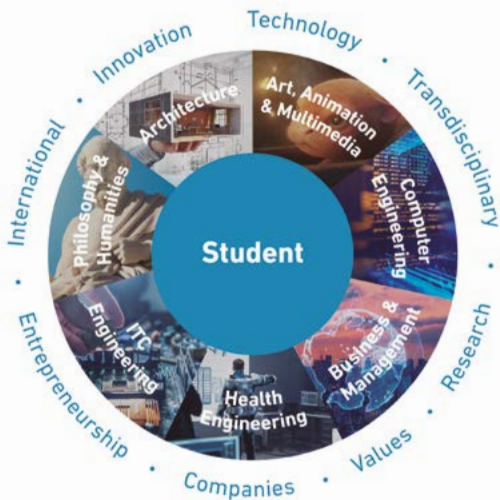
ON-CAMPUS

Study your Master in Barcelona on a campus of international excellence. Attend face-to-face classes with the added flexibility of being able to attend some sessions remotely, thanks to our Smart Learning technology.

In addition to the theoretical content, you will put your acquired knowledge to the test by carrying out individual and group projects. You will attend lectures by experts and industry events and visit companies to study their success stories.

La Salle

Campus Barcelona



Internet of Things R&D lab

La Salle promotes the largest European laboratory (2,000 m²) dedicated to innovation on the Internet of Things with a model that encourages **collaboration between companies, entrepreneurs, students, teachers and researchers.**

+ 30
Technological laboratories

6 Research groups

Interactive Arts & Science lab

One of the audiovisual hubs of reference in Catalonia where research into new forms of interaction between humans, machines and virtual, real and mixed environments is promoted.

La Salle Technova

Entrepreneurship and innovation are two fundamental values of La Salle-URL. The **La Salle Technova Technological Innovation and Entrepreneurship Park** is located on campus. **Students can realise their own business idea** and incubate it in the accelerator.

Top 10 European Accelerators by Gust & Fundacy Report

“Best Business Angels Network” Award by the Asociación Española de Business Angels in 2017

+ 500 Incubated and accelerated business projects

+ 27M € Funding for start-ups

Career Services

Our own **Learning by Challenge** methodology, based on **real business challenges**, allows us to be in contact with companies and respond to the needs of the market. We put students in contact with **top-level companies in all sectors**, and through our **career service** we promote the employability of our students.

+ 4,800 Both job offers and annual internships

96 % Occupancy rate of students

+ 2,000 Companies offering services in the business field

+ 1,200 Companies offering services in the engineering field

+ 300 Companies offering services in the architecture field

LA SALLE RANKINGS

Top 1 University of Catalonia in Employment placement in the business sector

U-Ranking, 2023

Top 1 Best University in Spain and 17th in the world in Business & Management

QS World University Rankings by Subject, 2023

Top 1 Best University in Catalonia in SDG 8

Times Higher Education Impact Rankings, 2023

Top 1 Best University in Spain in Engineering and Architecture Postgraduate Studies

U-Ranking, 2022

Top 1 Best University in Spain for Management

Global Ranking of Academic Subject, Shanghai
Ranking, 2022

Top 1 Best University in Spain in Business Administration

Global Ranking of Academic Subject, Shanghai
Ranking, 2022

Top 3 Best University in Spain

Times Higher Education Young University
Rankings, 2022

Top 5 Best Performing University in Spain

U-Multiranking, 2023

Top 5 Best University in Spain

U-Multiranking, 2023

ADMISSION PROCESS

DOCUMENTATION

- Registration form
- University degree accreditation
- Updated resume
- Copy of ID or Passport

PERSONAL INTERVIEW

Once your documentation has been reviewed, you will meet with the Programme Director to get to know you, assess your professional profile and ensure a diverse group of candidates.

BOOK YOUR PLACE

When the Admissions Committee validates your profile, we will inform you of the result of your admission process and the payment conditions.

1
Log in to our online
platform



2
Fill in
the form



3
Upload your
documentation



4
Interview in person
or online



5
Receive the outcome
of your application



6
Apply for your
scholarship



Start the
admission
process now



Check our
scholarships and
study grants

Be a Design Visionary: Shape the future architectural excellence

KNOWLEDGE AREAS

BUSINESS

- | Digital Management
- | Digital Business
- | Project Management

ENGINEERING

- | Data Analytics
- | Tech Skills Engineering
- | Digital Tech Engineering

ARCHITECTURE

- | Contemporary Architecture

PHILOSOPHY AND HUMANITIES

DIGITAL ARTS & ANIMATION

MASTERS AND POSTGRADUATE ADMISSIONS

+34 932 902 419
admissions@salle.url.edu

LA SALLE CAMPUS BARCELONA

Sant Joan de La Salle, 42.
08022 Barcelona
+34 932 902 419
www.salleurl.edu



Aristos
Campus
Mundus

Campus of
International
Excellence

MEMBERS OF



BE REAL,
BE YOU.